

Webinar Housekeeping

If you have not done so,
please call in for the audio portion of the call.

1-800-679-0308

Slides were e-mailed and are uploaded to the Forum
website:

<http://www.forumfyi.org/content/what-do-you-want-take->

Due to the format of today's webinar, your lines will be **muted**. We will take questions via the Chat feature located at the lower left hand side of your screen.





Ready by 21[®]

all youth ready for college, work & life

What Do You Want to Take Stock Of? Exploring the Gallup Student Poll November 29, 2011

Presented by
Kiley Bednar, the Forum for Youth Investment
Kris Minor, the Forum for Youth Investment
Polly Lusk Page, Northern Kentucky Education Council

After this webinar, you will

- Be familiar with the **Forum for Youth Investment** and the **Ready by 21 National Partnership**
- Understand a tool that can help you **spark discussion** and make **decisions about data** in your community
- Be aware of how the Gallup Student Poll can help you better understand the **social and emotional outcomes** of young people
- Understand **next steps** you can take as a leader to **improve the odds for children and youth**



the forum

FOR YOUTH INVESTMENT



Ready by 21 National Partnership

Founder & Managing Partner



Signature Partner



Mobilization Partners



AMERICAN ASSOCIATION
OF SCHOOL ADMINISTRATORS



NATIONAL
COLLABORATION
FOR YOUTH



NATIONAL CONFERENCE of STATE LEGISLATURES



CHILDREN'S CABINET
NETWORK

Managed by the Forum for Youth Investment

Technical Partners



GALLUP®

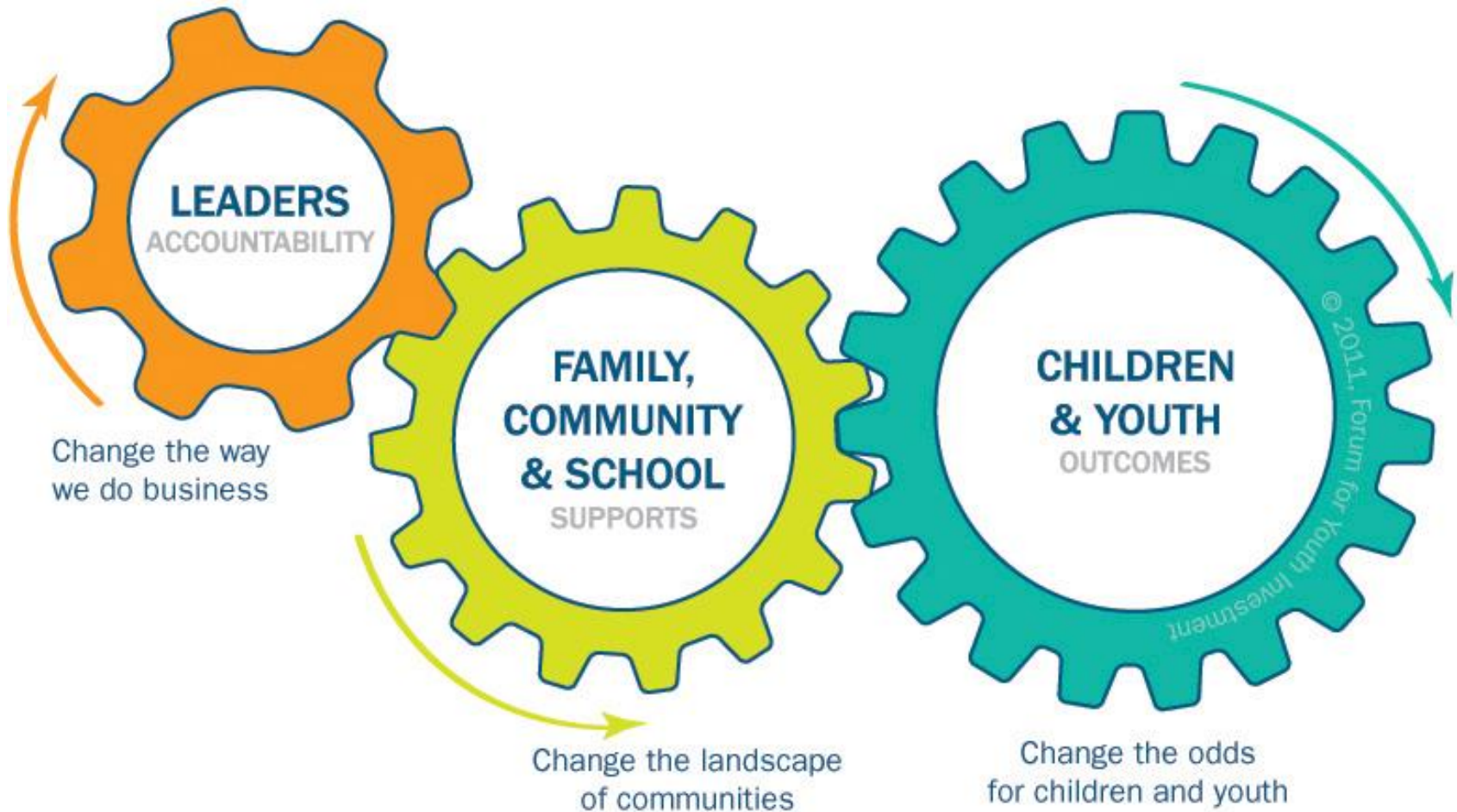
nfocus®
SOFTWARE
DATA DRIVEN RESULTS™



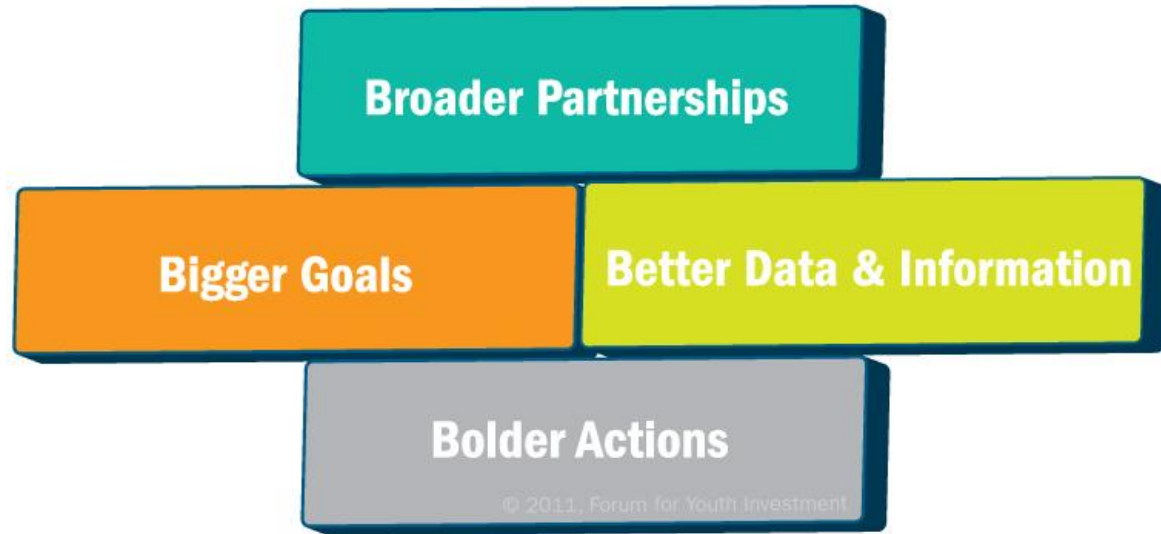
Ready by 21 focuses on the small gear

challenging leaders to think differently & act differently...

Moving the small gear makes a **BIG** difference



Building Blocks of Effective Change



Ready by 21

Leadership Capacity Standard



- Collect complete data about youth outcomes, community supports, and leadership actions – *to inform collective efforts and demonstrate the link to improved outcomes.*



WHAT DO YOU WANT TO TAKE STOCK OF?

Multiple types of information are needed to effectively translate goals into actions – information about the status of children and youth, programs, policies and public and political will. Look at the list below of ways to “take stock” for children and youth. Think about your capacity to fund/call for/participate in data collection projects that would create “taking stock” reports – whether on a single issue (e.g., youth employment) or the full set of issues identified.

		WAYS TO TAKE STOCK FOR CHILDREN & YOUTH	IMPORTANCE		AVAILABILITY		How is this information collected? Who should be contacted for more information?
			Low	Hi	Low	Hi	
YOUTH OUTCOMES	1	Demographics & Public Data – (e.g., Census Data, Administrative Data)	<input type="checkbox"/>	<input type="checkbox"/>	<input type="checkbox"/>	<input type="checkbox"/>	
	2	Developmental Progress – (e.g., social, emotional, learning indicators, internal assets)	<input type="checkbox"/>	<input type="checkbox"/>	<input type="checkbox"/>	<input type="checkbox"/>	
	3	External Assets & Supports – (e.g., 40 Assets, America’s Promise Every Child, Every Promise Survey)	<input type="checkbox"/>	<input type="checkbox"/>	<input type="checkbox"/>	<input type="checkbox"/>	
FAMILY & COMMUNITY SUPPORTS & RESOURCES	4	Program Participation – (e.g., Program/System Participation Reports, Tracking Individuals Across Programs)	<input type="checkbox"/>	<input type="checkbox"/>	<input type="checkbox"/>	<input type="checkbox"/>	
	5	Program Landscape – (e.g., Program and Offering Inventories)	<input type="checkbox"/>	<input type="checkbox"/>	<input type="checkbox"/>	<input type="checkbox"/>	
	6	Program Quality – (e.g., Program Assessments)	<input type="checkbox"/>	<input type="checkbox"/>	<input type="checkbox"/>	<input type="checkbox"/>	
	7	System/Organizational/Program Effectiveness – (e.g., Performance Measure Reports, Fidelity Reports)	<input type="checkbox"/>	<input type="checkbox"/>	<input type="checkbox"/>	<input type="checkbox"/>	
	8	Professional Workforce Capacity – (e.g., Workforce Survey, Professional Development Landscape Audit, External Assessments)	<input type="checkbox"/>	<input type="checkbox"/>	<input type="checkbox"/>	<input type="checkbox"/>	

Do you have data about youth outcomes, community supports and leadership actions?

- Yes/No

In which area would you like to collect more data?

- Youth outcomes
- Community supports
- Leadership actions



Take Aim: Ready Children & Youth



Youth Competencies Survey

- Importance?
- Information?



Take Aim: Socially & Civically Connected



GALLUP® Student Poll



Copyright Standards

This document contains proprietary research, copyrighted materials, and literary property of Gallup, Inc. It is for the guidance of your company only and is not to be copied, quoted, published, or divulged to others outside of your organization. Gallup® and Gallup Consulting® are trademarks of Gallup, Inc. All other trademarks are the property of their respective owners.

This document is of great value to both your organization and Gallup, Inc. Accordingly, international and domestic laws and penalties guaranteeing patent, copyright, trademark, and trade secret protection protect the ideas, concepts, and recommendations related within this document.

No changes may be made to this document without the express written permission of Gallup, Inc.

Gallup Student Poll Overview

The Gallup Student Poll is a 20-item measure of hope, engagement, and wellbeing. Gallup researchers targeted these three variables because they met the following criteria:

- They can be reliably measured
- They have a meaningful relationship with or impact on educational outcomes
- They are malleable and can be enhanced through deliberate action
- They are not measured directly by another large-scale survey
- They are not associated with a student's FARL status or parent's household income.

Hope | ideas and energy we have for the future | Double Hope

Engagement | involvement in/enthusiasm for school | Build Engaged Schools

Wellbeing | how we think about and experience our lives | Boost Wellbeing

Gallup Student Poll Overview *(continued)*

- **Hope — the ideas and energy we have for the future.**
 - Hope drives attendance, credits earned, and GPA of high school students. Hope predicts GPA and retention in college, and hope scores are more robust predictors of college success than are high school GPA, SAT, and ACT scores.
- **Engagement — the involvement in and enthusiasm for school.**
 - Engagement distinguishes between high performing and low-performing schools.
- **Wellbeing — how we think about and experience our lives.**
 - Wellbeing tells us how our students are doing today and predicts their success in the future. High school freshmen with high wellbeing earn more credits with a higher GPA than peers with low wellbeing. The typical student who is thriving earns 10% more credits and a 2.9 GPA (out of 4.0), whereas a student with low wellbeing, completing fewer credits, earns a 2.4 GPA.

The 20 Elements of Hopeful, Engaged, and Thriving Students

- Q01. On which step of the ladder would you say you personally feel you stand at this time? On which step do you think you will stand about five years from now?*
- Q02. I know I will graduate from high school.
- Q03. There is an adult in my life who cares about my future.
- Q04. I can think of many ways to get good grades.
- Q05. I energetically pursue my goals.
- Q06. I can find lots of ways around any problem.
- Q07. I know I will find a good job after I graduate.
- Q08. I have a best friend at school.
- Q09. I feel safe in this school.
- Q10. My teachers make me feel my schoolwork is important.

*This is an abbreviated text of the Cantril Self-Anchoring Striving Scale. For full text, see slide 63.

The 20 Elements of Hopeful, Engaged, and Thriving Students *(continued)*

- Q11. At this school, I have the opportunity to do what I do best every day.
- Q12. In the last seven days, I have received recognition or praise for doing good schoolwork.
- Q13. My school is committed to building the strengths of each student.
- Q14. In the last month, I volunteered my time to help others.
- Q15. Were you treated with respect all day yesterday?
- Q16. Did you smile or laugh a lot yesterday?
- Q17. Did you learn or do something interesting yesterday?
- Q18. Did you have enough energy to get things done yesterday?
- Q19. Do you have health problems that keep you from doing any of the things other people your age normally can do?
- Q20. If you are in trouble, do you have family or friends you can count on to help whenever you need them?

By using responses to the Hope items, Gallup can place students in three groups:

■ Hopeful

–These students have numerous ideas and abundant energy for the future. They are skilled at goal-directed thinking and perceive they can navigate pathways to achieve their goals. They are more likely to be engaged at school.

■ Stuck

–These students have few ideas about the future and lack the requisite motivation to achieve goals.

■ Discouraged

–These students have few ideas and possess negative conceptualizations of the future. They lack goal orientation and the skills needed to navigate pathways to achieve their goals. They are more likely to be actively disengaged at school.

<http://www.gallupstudentpoll.com/149936/Gallup-Student-Success-Model.aspx>

GALLUP® Student Poll



By using responses to the Engagement items, Gallup can place students in three groups:

■ Engaged

–These students are highly involved with and enthusiastic about school. They contribute to the learning process and likely involve their peers in the learning process as well. They are psychologically committed to school and have most needs met by the learning environment.

■ Not Engaged

–These students are present in the classroom, but they are not psychologically connected to school or the learning process. These students have some but not all needs met in the learning environment.

■ Actively Disengaged

–These students are not involved with the learning process and may be undermining that process for themselves and their peers. They are unhappy in school and will share that unhappiness with others.

<http://www.gallupstudentpoll.com/149936/Gallup-Student-Success-Model.aspx>

GALLUP® Student Poll



By using responses to the evaluative Wellbeing item, Gallup can place students in three groups:

■ Thriving

–These students have positive perceptions of their lives. They not only perceive their present life as good, but they are likely to see the future as even better. These students likely have their basic needs met. They tend to be in good health and have strong social support. They are well-positioned for academic success and are more likely to be engaged with school.

■ Struggling

–These students with lower well-being do not have positive thoughts about their present and future lives. They may lack basic needs and have weak social support.

■ Suffering

–These students have negative perceptions of their lives. They lack adequate personal and social resources and are more likely to be actively disengaged with school.

[http://www.gallupstudentpoll.com/149936/
Gallup-Student-Success-Model.aspx](http://www.gallupstudentpoll.com/149936/Gallup-Student-Success-Model.aspx)

GALLUP Student Poll | America's Promise Alliance

National Default Cohort Fall 2010

USA National Data

The Gallup Student Poll is a brief measure of hope, engagement, and wellbeing. The poll taps into the hearts and minds of American students to determine what drives wellbeing and achievement. Distribution and discussion of the Gallup Student Poll data will help create a more hopeful story about American youth and education, and will engage parents, teachers, and community leaders in social entrepreneurship.

Hope | GrandMean: 4.39 (out of 5) n=249819



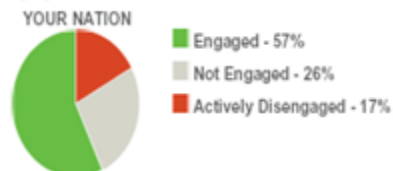
HOPE BY GRADE
(GrandMean)

Grade	5th	6th	7th	8th	9th	10th	11th	12th
GrandMean	4.42	4.42	4.40	4.38	4.36	4.34	4.36	4.40

73% of hopeful students are engaged.

Hope by Grade values not shown when n < 10

Engagement | GrandMean: 4.06 (out of 5) n=252427



ENGAGEMENT BY GRADE
(GrandMean)

Grade	5th	6th	7th	8th	9th	10th	11th	12th
GrandMean	4.38	4.28	4.12	4.00	3.92	3.79	3.77	3.80

84% of students who strongly agree their school is committed to building strengths are engaged.

Your school must have an n-size of at least 30 to receive Engagement Index data. Engagement by Grade values not shown when n < 10

Wellbeing | GrandMean: 8.51 (out of 10) n=266971



WELLBEING BY GRADE
(GrandMean)

Grade	5th	6th	7th	8th	9th	10th	11th	12th
GrandMean	8.41	8.57	8.56	8.56	8.50	8.46	8.49	8.54

65% of thriving students are engaged.

Wellbeing by Grade values not shown when n < 10

PROMOTION INDEX

71

The Promotion Index represents the percentage of students who graduate on time with a diploma, as reported by the Editorial Projects in Education (EPE) Research Center.

PROMISE INDEX

71

Gallup's partner organization, America's Promise Alliance, focuses upon meeting the Five Promises to kids: caring adults, safe places, a healthy start, an effective education, and opportunities to help others. The Promise Index is the percentage of students who have four or five of the promises that change lives met.

- No data available

Gallup Student Poll

■ Gallup Student Poll (basic)

- free for all public schools and districts for grades 5-12

■ Enhancements available

Northern Kentucky

- Polly Lusk Page, Executive Director of the Northern Kentucky Education Council



Enhanced Gallup Student Poll

- Northern Kentucky selected as national pilot site by the Ready by 21 National Partnership
- The Northern Kentucky Education Council serves as the lead agency for coordination and administration of the two-year pilot
 - In partnership with United Way of Greater Cincinnati and Vision 2015



Enhanced Gallup Student Poll

- The Enhanced Poll allows communities to:
 - Administer the poll outside of school
 - Track individual progress over time
 - Opportunity to integrate with existing individual student data
- Tracks individual progress around a composite hope, engagement and wellbeing score called “Ready for the Future”.
 - Students who are Ready for the Future are hopeful for the future, engaged at school and thriving in life



Enhanced Gallup Student Poll

- Included the 20 core items, an 11 item, Healthcare Access and Habits Index and demographics
- Administered in 49 schools representing 13 Northern Kentucky public school districts, one Cincinnati public high school and the Brighton Center
- A total of 21,239 students participated in the Poll
 - 20,552 students in Northern Kentucky alone
 - Students in grades 5 through 12 participated



Northern Kentucky Hope, Engagement, and Wellbeing by School Level

School Level	Total n	Hopeful	Stuck	Discouraged	Engaged	Not Engaged	Actively Dis-engaged	Thriving	Struggling	Suffering
Elementary School	1,441	52	31	17	73	18	9	69	29	2
Middle School	9,669	55	30	15	59	26	15	71	28	1
High School	10,115	55	32	13	47	33	20	67	32	1

Note: Due to rounding, percentages may add up to 100% \pm 1%

Northern Kentucky Hope, Engagement, and Wellbeing by County

County	Total n	Hopeful	Stuck	Discouraged	Engaged	Not Engaged	Actively Disengaged	Thriving	Struggling	Suffering
Boone	5,281	56	30	14	57	28	15	71	28	1
Campbell	3,731	54	33	13	55	29	16	69	30	1
Gallatin	795	51	33	16	50	31	19	66	33	1
Grant	444	56	30	14	62	26	12	65	34	1
Hamilton	687	54	37	9	47	36	17	70	30	0
Kenton	9,060	55	31	14	53	29	18	68	31	1
Pendleton	1,227	52	32	16	53	29	18	67	32	1

Note: Due to rounding, percentages may add up to 100% ±1%

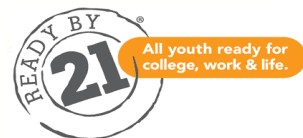
Northern Kentucky Schools — Spring 2011

Item Means and Percentage of 5s by School Level

	Northern Kentucky Schools Overall (n=20,552)		Elementary (n=1,441)		Middle (n=9,669)		High (n=10,115)	
	GM	%5s	GM	%5s	GM	%5s	GM	%5s
Hope GrandMean	4.43		4.45		4.43		4.43	
Engagement GrandMean	4.04		4.35		4.10		3.93	
Graduate	4.82	89	4.74	82	4.80	87	4.86	92
Adult Cares	4.82	90	4.83	91	4.84	91	4.81	89
Get Good Grades	4.38	57	4.36	55	4.35	55	4.41	60
Pursue Goals	4.16	43	4.26	50	4.16	43	4.15	42
Ways Around Problem	3.93	34	3.77	32	3.88	32	4.00	35
Find a Good Job	4.40	60	4.60	73	4.48	64	4.30	54
Best Friend	4.64	81	4.77	87	4.73	85	4.50	74
Feel Safe	4.10	48	4.29	61	4.07	48	4.09	46
Schoolwork Important	4.09	46	4.49	70	4.19	52	3.94	37
Opportunity to Do Best	3.91	39	4.24	56	3.96	42	3.83	35
Recognition	3.43	31	3.91	43	3.51	33	3.28	26
Committed to Strengths*	3.89	39	4.42	65	4.05	45	3.67	29
Volunteered Time*	3.53	32	3.80	38	3.53	32	3.49	32

*Items not included in GrandMean or index calculations.

GALLUP® Student Poll



Northern Kentucky — Spring 2011

Healthcare Access and Habits Index Percentage of Yes Responses

	Doctor	Dentist	Safe Place	Health Insurance	Personal Doctor
	%Yes	%Yes	%Yes	%Yes	%Yes
Overall	74	77	98	95	67
Boone	79	82	99	96	68
Campbell	73	78	98	95	65
Gallatin	63	68	97	92	68
Grant	64	80	99	96	71
Kenton	74	76	98	95	67
Pendleton	64	70	97	95	66

Summary of Findings

- 33% of students qualify as “Ready for the Future”—are hopeful, engaged, and thriving
- The range across schools for RFF scores is 14% to 63%
- Engagement declines across grades impacting RFF scores



How NKY School Districts Are Using the Data

- Individual student goal setting
- Needs assessments at the school and district level
- Mentoring
- Individual Learning Plans (Grades 6-12)
- Counseling
- Increasing service learning opportunities
- Triangulating cognitive and noncognitive data for Response to Intervention



How NKY School Districts are Triangulating the Data

- Gallup Enhanced Student Poll
- Academic Data
- Persistence to Graduation Tool
- TELL Teacher Surveys



Next Steps in NKY

- Conduct school district “best practice” survey
- Create “Northern Kentucky Promising Practices” guide
- Provide training
- Finalize Program Landscape Map
- Administer Year 2



Questions and Discussion



Our Offerings

- **Ready by 21 Webinars**
 - Email Kiley@ForumFyi.org
- **Technical Assistance & our New Leader Network**
 - Readyby21.org
 - Email ReadyLeader@ReadyBy21.org
- **Field Services**
 - Email Ian@ForumFyi.org



Next steps....

- **Webinar Evaluation, please. Thank you!**
- **Ready by 21 Monthly Webinar**
 - December 13, 2011 at 3:00 PM (ET)
- **Sign up for our newsletters**
 - Go to Forumfyi.org and sign up in the top right-hand corner
- **Sign up to take the Gallup Student Poll next fall**
 - gallupstudentpoll.com
 - For more info on the GSPi, contact the Forum for Youth Investment.



THANK YOU!

Readyby21.org
Forumfyi.org



kiley@forumfyi.org